



**mocom**<sup>®</sup>

Naturally sterilizers



Millennium Series

Not just an ordinary sterilizer.





## We only deal with sterilization. That's why we do it so well.

Mocom is a leading manufacturer of innovative sterilizers that focus on quality, innovation and design.



Sterilization in the dentistry field has reached extremely high safety levels, guaranteeing protection standards that are certified against cross contamination and transmission of infections and pathologies.

For over twenty years, Mocom has been an active player in this development, dedicating itself exclusively to designing and producing easy-to-use sterilization systems and accessories with constant and effective performances capable of meeting different dental requirements.

The attention placed on the choice of the materials, use of cutting-edge technologies, adoption of strict production and control protocols, and the experience of qualified and specialised personnel in the designing of sterilization systems have allowed Mocom to become a world leader in terms of competence and innovation.

Furthermore, Mocom is constantly committed to manufacturing ecofriendly systems. With only one objective: your safety and the safety of your patients.

---

### A quality production guaranteed by strict certifications and approvals, including:

- **ISO 9001/ISO 13485:** Quality System applied to Medical Devices
- **CE 0051:** Approval of Medical Devices for the European Community
- **FDA:** Approval of Medical Devices for the USA
- **Health Canada:** Approval of Medical Devices for Canada

### Products in compliance with the following regulations:

- **1993/42/CEE Medical Device Directive** (as further amended and extended)
- **2007/47/CE Medical Device Directive**
- **2004/108/CE Electromagnetic Compatibility Directive**
- **2006/95/CE Low Voltage Directive**
- **EN 13060:** Small steam sterilizers
- **EN 61010-1:** Safety requirements for electrical equipment for laboratory use
- **EN 61010-2-040:** Particular safety requirements for steam sterilizers





# Low consumption, high performance.

We want you to save money by guaranteeing functionality and safety in every operation.

We build them so that they are simple to use, practical and functional.



We design them to meet all your requirements.



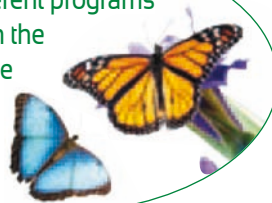
Drop by drop, the best water treatment.



Different sizes, same high quality.



We offer different programs depending on the materials to be sterilized.



We guarantee your safety and protection of your data.



We want them to be productive and efficient.





We make them versatile to meet all your needs.

Millennium B, Millennium B<sup>+</sup>, Millennium B<sup>2</sup> in stand-alone version.

### Safety and practicality

Equipped with carefully studied and designed fittings and devices, the Millennium autoclaves allow selecting the best configuration for your needs, always guaranteeing high standards of safety and efficiency.

The transport and installation phases are made even simpler by handles on the top of the autoclave.

After positioning the autoclave in the sterilization area, the handles can be easily removed.

### Easy to install and manage

The **Stand-Along** version allows installing the autoclave immediately in any position by simply connecting it to a power outlet.

A practical opening on top of the autoclave allows pouring the demineralised water directly into the tank. A display is present for monitoring the correct water level. Alternatively, an auxiliary pump is also available for automatically pumping water from an external tank that can be connected to the back of the autoclave.

The optional connection to the Milldrop reverse osmosis system, instead, allows the demineralised water to be pumped directly from the water supply system.

The remaining water can be discharged through a front connection, or through a special connection on the back of the autoclave that can be directly connected to the drainpipes.





## We build them so that they are Millennium B, Millennium B<sup>+</sup> with Mocopure 100.



Thanks to the **Mocopure 100** demineralization system with ion exchange, the Millennium autoclaves are completely autonomous, providing considerable time saving and optimisation of the operating phases.

**Mocopure 100** allows automatically filling the tank with demineralized water and constantly controlling the quality by means of an In-built conductivity sensor.

Directly applied to the autoclave, **Mocopure 100** guarantees an autonomy of 250-350 cycles (based on the quality and hardness of the water from the mains water supply and on the type of cycle). Therefore, it is a perfect solution for studies requiring only a few sterilization cycles a day.

The special connection situated on the back of the autoclave allows managing the water draining in a completely automatic way.



simple, practical and functional.

Millennium B, Millennium B<sup>+</sup>, Millennium B<sup>2</sup>  
with Mocopure 500.



Based on the eco-friendly principle of reverse osmosis, **Mocopure 500** guarantees efficient and economical water supply, which optimises the automatic operation of the Millennium autoclaves.

With a demineralized water production for 1200-1500 cycles (based on the quality and hardness of the water from the mains water supply and on the type of cycle), **Mocopure 500** allows meeting the requirements of studies that execute numerous sterilization cycles a day. The quality of the water produced by **Mocopure 500** is monitored by an in-built conductivity sensor, which allows managing the water supply in an immediate and autonomous way.

**Mocopure 500** can be positioned in a versatile way, based on the operating space available, allowing it to integrate perfectly in the sterilization line. The Millennium autoclaves equipped with **Mocopure 500** also include automatic draining of the water.



## Drop by drop, the best water treatment.

The Mocopure systems are designed to integrate perfectly with the autoclaves.



Mocopure 100

### Mocopure 100

The **Mocopure 100** resin demineralizer is made up of two resin cartridges with ionic exchange. This system allows eliminating the ions that contaminate the water supply system, thus producing high quality demineralizer water.

The system, operated by AA batteries, is equipped with different acoustic and light signals for indicating when it is necessary to replace the cartridges or batteries. They can be easily replaced in a few simple steps.



Mocopure 500

### Mocopure 500

The **Mocopure 500** demineralizer with reverse osmosis is an eco-friendly system that ensures, cycle after cycle, the correct supply of demineralizer water to the Mocom autoclaves. The passage of water from the mains supply via the osmotic membrane allows eliminating organic and inorganic substances, and producing water with perfect sterilization characteristics.

It comes with an in-built monitoring system that indicates (with acoustic signals and lights) when it is necessary to replace the filters and batteries, thus guaranteeing constant and optimal functioning of the demineralizer.

---

### Milldrop

Automatic system with reverse osmosis for producing demineralized water. Connected to an external tank, Milldrop can manage up to three autoclaves.



### Stillo

Autonomous water distiller complete with container that can produce 4 litres in 6 hours. Completely automatic.







## We offer different programs depending on the material to be sterilised.

We designed them so that you can choose the most suitable program for your needs.



The new control panel makes it easier to use the autoclave, enabling rapid and intuitive selection of the menu items.

### More cycles, faster

The steam generator the top-performance dual headed vacuum pump with two heads allow completing Type-B cycles for hollow or porous instruments in less than 30 minutes.

To meet the different sterilization requirements, the Mocom autoclaves come with four main pre-set programs and two test programs (Helix and Bowie&Dick test cycle and vacuum test cycle) with the possibility to select further seven programs. The cycles are all executed without waiting times and, at the end of the cycle, the autoclave goes into stand-by mode. An automatic shut-off function is also available.

saving  
**30%**  
compared to a traditional "B" cycle

Material	Program	Total time			Process
		B 17 litres	B* 17 litres	B² 22 litres	
<b>Main pre-set programs</b>					
Wrapped hollow* instruments, porous materials	B cycle	39 minutes	30 minutes	40 minutes	134 °C 4'
Wrapped hollow* instruments, porous materials	B cycle	54 minutes	45 minutes	54 minutes	121 °C 20'
Wrapped hollow* instruments, porous materials	Prion	55 minutes	44 minutes	54 minutes	134 °C 18'
Unwrapped solid instruments	Emergency	16 minutes	12 minutes	14 minutes	134 °C 3'
Helix and Bowie&Dick Test	Test	22 minutes	20 minutes	22 minutes	134 °C 3,5'
Vacuum Test	Test	27 minutes	24 minutes	25 minutes	-

\* "A" and "B" hollow instruments according to EN 13060.



## We want our products to be productive and efficient.

The best materials and applied technological innovations make the Mocom autoclaves an indispensable and excellent working tool.



### Sterilization chamber

The sterilization chamber is made entirely of electro-polished stainless steel, thus guaranteeing high quality and durability over time.

The rotating stainless steel frame inside the chamber can hold 5 trays or 3 drawers.



### Steel wire trays

To improve the flow of steam inside the chamber and consequently the drying of the load, the Mocom autoclaves come with practical steel wire trays.

### Optimized drying

Thanks to the exclusive calibrated drying system, the autoclave automatically selects the correct drying treatment according to the load quantity. This ensures that the instruments will always be dry on completion of the cycle.



### Automatic filling and draining of water

To make the sterilization system even more ergonomic, the Millennium autoclaves are equipped with practical connections that allow automatic filling in the presence of a demineralization system connected to the water supply system and draining of the used water directly into the drainpipe.



## We guarantee safety for you and protection of your data.

Safety and inspection systems for complying with the current regulations and for storing your data so that you can work in complete tranquillity.



### Automatic door lock

The patented electromechanical system with triple protection ensures locking of the door before each cycle and complete sealing of the chamber. The automatic closing of the door also protects the sealing efficiency of the gasket.



### Programmed maintenance

To allow you to operate in absolute safety, the Mocom autoclaves are equipped with a self-testing system that signals the need for any type of maintenance, such as:

- Replacement of bacteriologic filter
- Cleaning of chamber filter
- Replacement of door gasket
- General servicing



### Documentation of the cycles

The Mocom autoclaves allow selecting the data storage method which best suits your dental practice. In fact, the data can be printed on paper or saved in digital format on a USB pen drive. This system is the most practical, safe and modern way to transfer data for storing on a computer.

### Certified production and testing

Before being approved for use, each Mocom autoclave is tested for 7 hours in compliance with the EN 13060 standard. The specific document relating to the "Works Test" (upon request) is supplied together with the autoclave.

### Process self-evaluation system

The advanced self-evaluation system of the sterilization process (Process Evaluation System in accordance with the EN 13060 standard) allows an accurate cross control of the main parameters (temperature, pressure and time) and immediate indication of any anomalies during the sterilization cycle.

### Updated software

The special integrated connection allows updating the software simply and quickly to guarantee maximum efficiency of the autoclave.



## Different dimensions, same quality.

A complete range of autoclaves to choose the model that best suits your needs.

Technical data	Millennium B 17 litres	Millennium B <sup>+</sup> 17 litres	Millennium B <sup>2</sup> 22 litres
Power supply	220/240 V (other voltages upon request)	220/240 V (other voltages upon request)	220/240 V (other voltages upon request)
Mains frequency	50/60 Hz	50/60 Hz	50/60 Hz
Rated power	2300 W (10 A)	2300 W (10 A)	2300 W (10 A)
External dimensions	480x420x560 mm (WxHxD)	480x420x560 mm (WxHxD)	480x420x660 mm (WxHxD)
Total weight	54 kg	57 kg	62 kg
Water autonomy	6 to 10 cycles	6 to 10 cycles	6 to 10 cycles
Chamber dimensions	250x350 mm (diam.xD)	250x350 mm (diam.xD)	250x450 mm (diam.xD)
Steel wire trays	3	5	3
Integrated thermal printer	optional	standard	optional

PREMIUM

**Included:** tray holder, manual filling/draining kit, two bacteriologic filters, one USB pen drive.

## Mocopure Systems

Technical data	Mocopure 100	Mocopure 500
Power supply	3V c.c. supplied by two AA 1.5V batteries	3V c.c. supplied by two AA 1.5V batteries
Incoming water	mains water supply	mains water supply
Outgoing water (conductibility)	< 15 µS/cm	< 15 µS/cm
Min. and max. pressure of mains water supply	1-5 bar	1-5 bar
Min. and max. temperature of mains water	+5°C ÷ +40°C	+5°C ÷ +40°C
Dimensions	366 x 365 x 143 mm (WxHxD)	461 x 328 x 206 mm (WxHxD)
Weight	3.5 kg	5.5 kg

**GUARANTEE**  
2500 cycles  
or 24 months

of 2500 cycles  
or 24 months

